

ESX1-19-X Revit Model **Features**

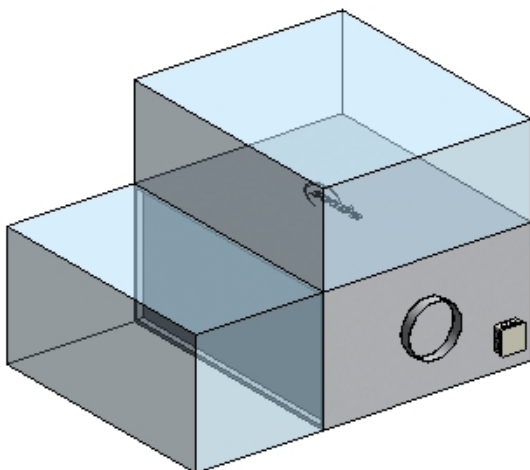
1. The model uses a type catalogue so all sizes of the external, inline, Quietscroll ESX range between sizes 1 and 19 can be inserted using the same .rfa file (see Read Me file attached for further info)

The esx1-19-x.rfa model attached includes the following options in the Model Properties category in the Properties window

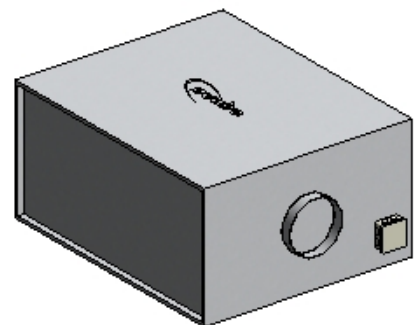
Model Properties	
Show Room Side Silencer	<input type="checkbox"/>
Show Atmosphere Side Silencer	<input type="checkbox"/>
Long Room Side Silencer	<input type="checkbox"/>
Long Atmosphere Side Silencer	<input type="checkbox"/>
Show Access Clearance	<input checked="" type="checkbox"/>

2. 'Show Access Clearance' allows you to show or hide the access clearance transparent area of the model.

Show Access Clearance ☒

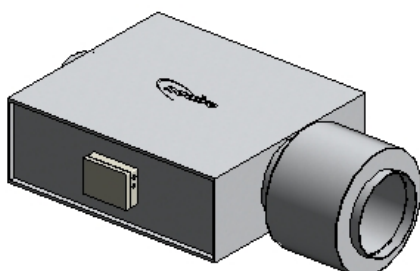


Show Access Clearance ☐

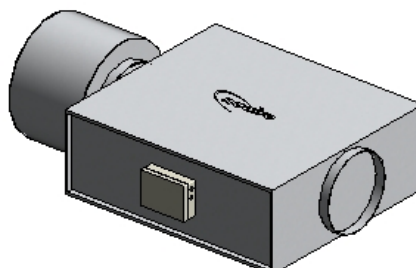


3. 'Show Room/Atmosphere Side Silencer' allows you show or hide the appropriate matched silencers on each end. The silencers that appear are based on our CA range i.e. CA63S etc.
 This will only work for ESX sizes 4 and up. We do not offer a CA silencer with a spigot size small enough for the ESX1-3 i.e. <Ø250mm, therefore they will not be shown.

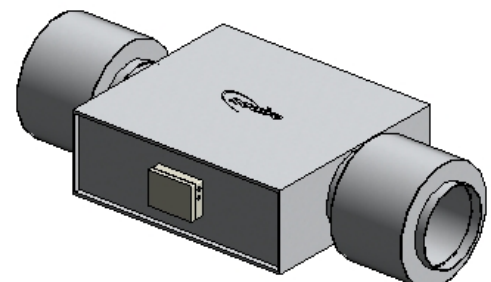
Show Room Side Silencer ☒
 Show Atmosphere Side Silencer ☐



Show Room Side Silencer ☐
 Show Atmosphere Side Silencer ☒



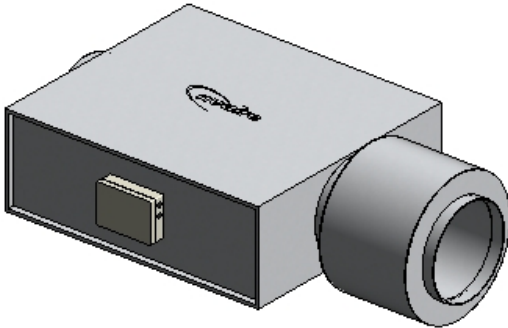
Show Room Side Silencer ☒
 Show Atmosphere Side Silencer ☒



Continued on next page...

4. 'Long Room/Atmosphere Side Silencer' allows you to change to desired silencer to the long version i.e. CA63L rather than CA63S. (The short silencers are 1x diameter long, the long silencers are 2x diameters long)

Long Room Side Silencer



Long Room Side Silencer

